

References for Information Graphic:

Author links open overlay panel Edward A. Wasserman a b, a, b, c, d, Abstract Might there be parallels between category learning in animals and word learning in children? To examine this possibility, Waxman, S. R., Vouloumanos, A., Trueswell, J. C., Smith, L. B., Siskind, J. M., Pinker, S., Pilley, J. W., O'Hanlon, C. G., McCloskey, M., McClelland, J. L., Markman, E. M., Liberman, A. M., Katagiri, M., ... Golinkoff, R. M. (2014, December 8). *Pigeons acquire multiple categories in parallel via associative learning: A parallel to human word learning?* *Cognition*. Retrieved February 16, 2023, from <https://www.sciencedirect.com/science/article/abs/pii/S0010027714002406>

Christal Pollock, D. V. M. (2022, August 16). *Pigeon Anatomy & Physiology: 15 facts*. LafeberVet. Retrieved February 16, 2023, from <https://lafeber.com/vet/pigeon-anatomy-physiology-15-key-facts/>

Gagliardo, A., Ioalé, P., & Bingman, V. P. (1999, January 1). *Homing in pigeons: The role of the hippocampal formation in the representation of landmarks used for navigation*. *The Journal of neuroscience : the official journal of the Society for Neuroscience*. Retrieved February 16, 2023, from <https://www.ncbi.nlm.nih.gov/pmc/articles/PMC6782352/>

Hagstrum, J. T. (2013, February 15). *Atmospheric propagation modeling indicates homing pigeons use loft-specific infrasonic 'map' cues*. *The Company of Biologists*. Retrieved February 16, 2023, from <https://journals.biologists.com/jeb/article/216/4/687/11868/Atmospheric-propagation-modeling-indicates-homing>

Hough, G. E. (2022, February 28). *Neural substrates of homing pigeon spatial navigation: Results from Electrophysiology Studies*. *Frontiers*. Retrieved February 16, 2023, from <https://www.frontiersin.org/articles/10.3389/fpsyg.2022.867939/full>

Levenson, R. M., Krupinski, E. A., Navarro, V. M., & Wasserman, E. A. (2015, November 18). *Pigeons (Columba Livia) as trainable observers of pathology and Radiology Breast Cancer images*. *PloS one*. Retrieved February 16, 2023, from <https://www.ncbi.nlm.nih.gov/pmc/articles/PMC4651348/#pone.0141357.ref011>

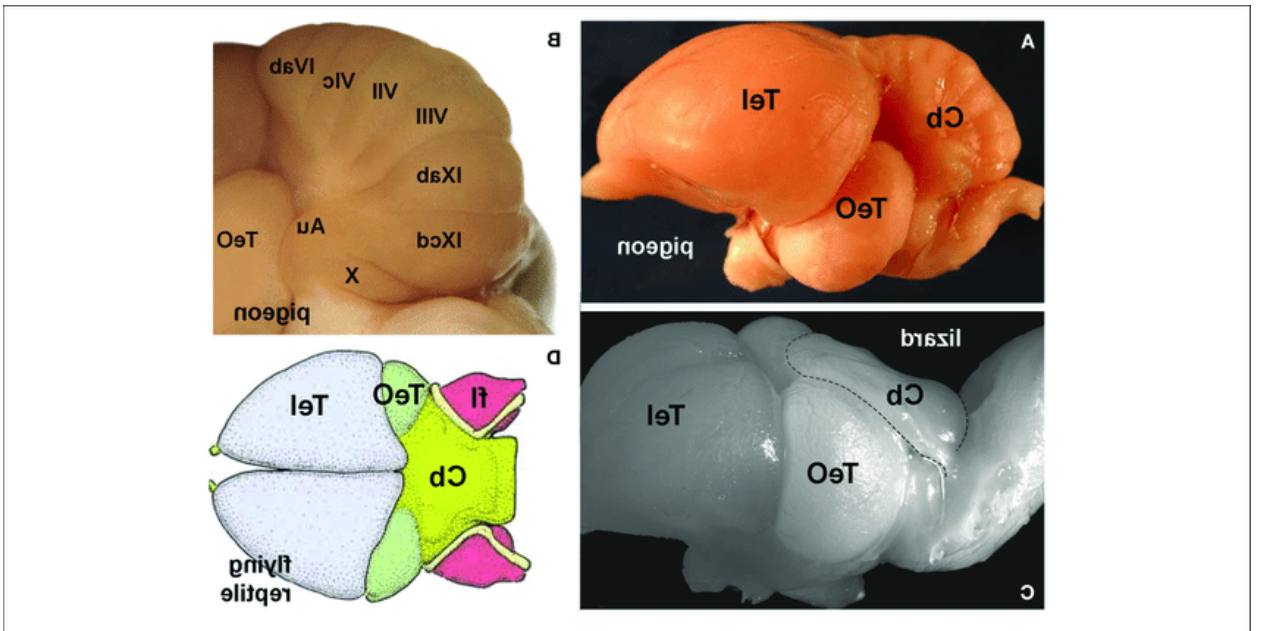
Pigeon Brain Atlas. Pigeon brain atlas | Bio-Imaging Lab | University of Antwerp. (n.d.). Retrieved February 16, 2023, from <https://www.uantwerpen.be/en/research-groups/bio-imaging-lab/research/mri-atlases/pigeon-brain-atlas/>

Researchers, U. of M. (n.d.). How do pigeons find their way home? we looked in their ears with a diamond-based quantum microscope to find out. Retrieved February 16, 2023, from <https://findanexpert.unimelb.edu.au/news/34101-how-do-pigeons-find-their-way-home%3F-we-looked-in-their-ears-with-a-diamond-based-quantum-microscope-to-find-out>

Watanabe, S., Sakamoto, J., & Wakita, M. (1995, March). *Pigeons' discrimination of paintings by Monet and Picasso*. *Journal of the experimental analysis of behavior*. Retrieved February 16, 2023, from <https://www.ncbi.nlm.nih.gov/pmc/articles/PMC1334394/>

Zhao, X., Chen, H.-B., Lu, L.-H., & Li, Y.-Q. (2021, June 22). *Compass-Free Migratory Navigation*. arXiv.org. Retrieved February 16, 2023, from <https://arxiv.org/abs/2106.12903>







Download from
Dreamstime.com

This watermarked comp image is for previewing purposes only.

ID 34942417

Leisuretime70 | Dreamstime.com

Target audience:

This is intended for the general public to raise awareness of how pigeons should be respected and are not just pests.